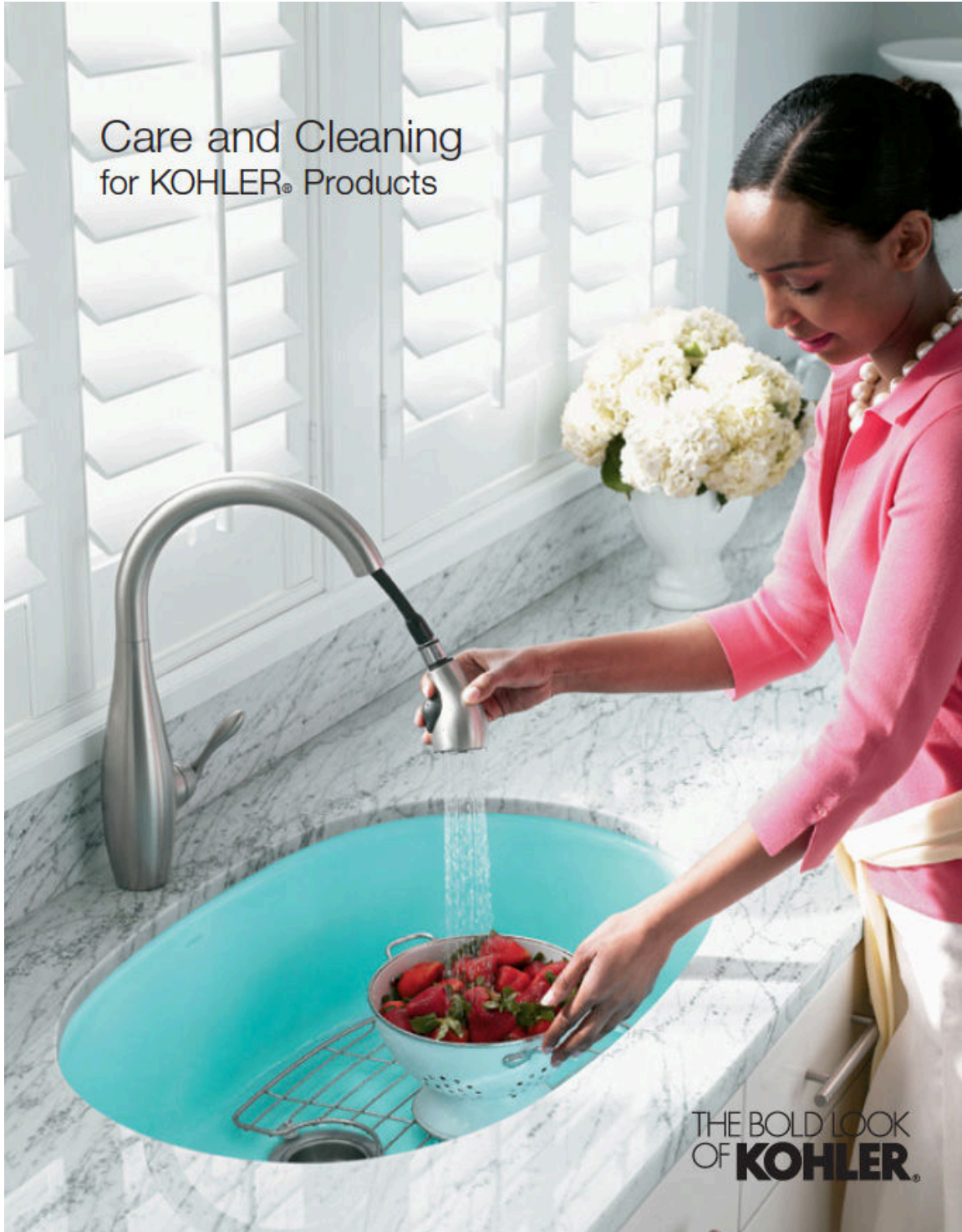


Care and Cleaning
for KOHLER® Products



THE BOLD LOOK
OF **KOHLER**®



Durable materials, innovative technology and artistic craftsmanship. At Kohler we are committed to a singular level of quality in everything we create. When cared for properly, your KOHLER® product will maintain its beauty and performance.

THE BOLD LOOK
OF **KOHLER**®

1



What You'll Find Inside

This brochure is designed to provide you with complete care and cleaning information, from general care instructions to specific cleaners for individual products.

Since it only takes a little routine maintenance to

keep your KOHLER[®] product in excellent condition, it's essential to understand which cleaning products and application procedures to use.*

For best results, keep the following in mind when caring for your KOHLER product:

Test First

Always test your cleaning solution on an inconspicuous area before applying to the entire surface.

Wipe Clean

Wipe surfaces clean and rinse completely with water immediately after applying cleaner. Rinse and dry any overspray that lands on nearby surfaces.

Don't Let Cleaners Soak

Do not allow cleaners to soak.

Avoid Abrasive Materials

Use a soft, dampened sponge or cloth. Never use an abrasive material such as a brush or scouring pad to clean surfaces.

For complete warranty information,
call 1-800-4-KOHLER or visit **KOHLER**.com

*Success with cleaners and procedures is dependent upon such factors as the hardness and temperature of the water, using exact measurements of ingredients, changes in cleaning formulas and the condition of the product being cleaned. Since there are variations within these factors, Kohler cannot guarantee the effectiveness of the formulas mentioned in this brochure.



Glossary of Materials

FAUCET METALS Chrome & Vibrant® PVD Color/Finishes Page 5

KOHLER® faucets are made from solid brass or zinc die-cast metal, providing a durable base for a variety of Polished or Brushed textures, as well as a palette of KOHLER colors. All faucet finishes exceed industry durability standards over two times.

KOHLER CAST IRON Whirlpools, Baths, Shower Receptors, Kitchen Sinks & Lavatories Page 6

Authentic KOHLER Cast Iron, with its ultra-thick layer of enamel, is unsurpassed in durability. The solid nature of this material allows beautiful shapes to be created with deep color and a glossy surface.

VITREOUS CHINA & FIRECLAY Lavatories, Toilets, Bidets, Ceramic Faucets & Kitchen Sinks Page 7

Vitreous china and fireclay provide enduring beauty. The KOHLER clay mixture is fired at an intense heat to vitrify the clay and fuse the glaze. The result is a durable, nonporous product that is easy to clean and will not stain, discolor, rust or fade.

PLASTICS Whirlpools, Baths, Showers & Toilet Seats Page 8

Acrylic and FRP bath and shower modules are lightweight and easy to install, with smooth walls for simplified cleaning. Plastic toilet seats are formed for comfort with a surface that is color-matched with KOHLER toilets.

STAINLESS STEEL Kitchen Sinks & Lavatories Page 9

KOHLER stainless products are formed from premium residential level gauge stainless steel. The high-quality finish is seen in its rich, lustrous sheen.

COUNTERTOP SURFACES Page 10

Completing the look of KOHLER console tables and bathroom furniture, KOHLER countertops are crafted from a variety of materials in a wide range of textured colors. Made of lavastone, marble or blended stone, they bring elements found in nature to the bathroom.

WOOD FURNITURE Page 10

KOHLER bathroom furniture is made from a variety of woods, including hardwood veneers, hard maple solids, mahogany and ash. To maintain the natural appearance of these woods requires gentle care and routine cleaning.

SPECIAL SURFACES Artist Editions, Shower Doors, Mirrored Cabinetry & Spun Glass Vessels Lavatories Page 11

KOHLER Artist Editions have decorative or etched designs applied to KOHLER Cast Iron, vitreous china, fireclay, stainless steel, glass or bronze surfaces. Glass surfaces range in glass thickness, patterns and textures. Bronze is a living finish and will patina over time.

Faucets

Chrome & Vibrant® PVD Color/ Finishes – Faucets & Fittings



- Rinse thoroughly and use a soft cloth to wipe the product dry after each use.
- Do not use cleaners containing ammonia, bleach, acid or abrasives.



Care Tip: The ideal cleaning technique is to always blot dry any water from metal surfaces. Allowing water to evaporate on metal will form water deposits. It is important to use a dabbing action to dry metal, not an abrasive or rubbing action. Cleaning with a damp sponge and buff drying should keep your product looking beautiful.

Products to Consider

- Comet Bathroom Cleaner
- Fantastik Antibacterial Heavy Duty
- Windex Original

Vitreous China



- Rinse thoroughly and use a soft cloth to wipe the product dry after each use.
- Soft abrasive cleaners may be used when necessary to clean KOHLER® vitreous china products. Strong abrasive cleaners will scratch and dull the surface.

Products to Consider

- Comet Bathroom Cleaner
- Fantastik Antibacterial Heavy Duty
- Windex Original

KOHLER® Cast Iron

Whirlpools, Baths, Lavatories & Shower Receptors



- Rinse thoroughly and use a soft cloth to wipe the product dry after each use.
- In the rare occurrence of stubborn stains, use abrasive cleaners sparingly, but not on Safeguard, slip-resistant surfaces.
- Use a soft nylon brush on the Safeguard surface on the bottom of the bath.
- Do not use steel wool, wire brushes or abrasive sponge pads.

Care Tip: Cream-based cleaners may have a tendency to build up, reducing the friction on slip-resistant surfaces. Be sure to use water-soluble cleaners (dissolve 100% in water).

Products to Consider

- | | |
|---------------------------------------------------------------------------------------------------------------------------------------------------------------------------------------------------------------------------------------------------------------------------|--------------------------------------------------------------------------------------------------------------------------------------------------------------------------------------------------------------------------------------------------------------------------------------------------------------------------------|
| <ul style="list-style-type: none"> • Comet Bathroom Cleaner • Fantastik Antibacterial Heavy Duty • Formula 409 Antibacterial All Purpose • Windex Original • Lysol Bathroom Cleaner • Tilex Soap Scum Remover | <p>For Rust Removal:</p> <ul style="list-style-type: none"> • Bon Ami • Super Iron Out Multi-Purpose Rust Stain Remover • Zud Multi-Purpose Cream Cleanser <p>Safeguard Slip-Resistant Surface:</p> <ul style="list-style-type: none"> • Express R.O.G.3 Tub and Tile Cleaner* |
|---------------------------------------------------------------------------------------------------------------------------------------------------------------------------------------------------------------------------------------------------------------------------|--------------------------------------------------------------------------------------------------------------------------------------------------------------------------------------------------------------------------------------------------------------------------------------------------------------------------------|

*Not sold commercially. Call 1-800-470-8337 to order.

Kitchen Sinks



- Rinse thoroughly and use a soft cloth to wipe the product dry after each use.
- In the rare occurrence of stubborn stains, use abrasive cleaners sparingly.
- Do not use steel wool, wire brushes or abrasive sponge pads.
- Be careful not to leave dirty dishes, coffee grounds, tea bags or other staining materials in contact with the enamel surface for extended periods of time.
- Consider kitchen sink accessories such as bottom basin racks and rinse baskets to help protect the surface from scratches.

Care Tip: KOHLER Cast Iron Cleaner effectively removes marks left behind by dishes, cookware and other kitchen utensils, and restores the product's original shine and luster. Product #1012525. To order, call 1-800-4-KOHLER or visit KOHLER.com/cleaner.



Products to Consider

- | | |
|----------------------------------------------------------------------------------------------------------------------------------------------------------------------------------------------------------------------------------|---------------------------------------------------------------------------------------------------------------------------------------------------------------------------------------------|
| <ul style="list-style-type: none"> • Fantastik Antibacterial Heavy Duty • Formula 409 Antibacterial All Purpose • KOHLER Cast Iron Cleaner (for occasional use only) • Windex Original | <p>For Rust Removal:</p> <ul style="list-style-type: none"> • Bon Ami • Super Iron Out Multi-Purpose Rust Stain Remover • Zud Multi-Purpose Cream Cleanser |
|----------------------------------------------------------------------------------------------------------------------------------------------------------------------------------------------------------------------------------|---------------------------------------------------------------------------------------------------------------------------------------------------------------------------------------------|

Cleaning instructions listed pertain only to their corresponding material, and are not intended for faucet cleaning. See page 5 for specific faucet cleaning instructions.

Vitreous China & Fireclay

Lavatories, Toilets & Bidets



- Rinse thoroughly and use a soft cloth to wipe the product dry after each use.
- Soft abrasive cleaners may be used when necessary to clean KOHLER® vitreous china products. Strong abrasive cleaners will scratch and dull the surface.
- Use toilet bowl cleaners on the inside of the bowl only.
- Do not use in-tank toilet cleaners as they can damage the flush valve or other working parts.
- Wipe any splashes of cleaner solutions from plastic or plated surfaces immediately.

Care Tip: Over time, hard water deposits may clog toilet rim holes and trapways. To clean, purchase a commercial cleaner that's recommended for the removal of hard water deposits. Follow all instructions on the package.

Products to Consider

- Comet Bathroom Cleaner
 - Fantastik Antibacterial Heavy Duty
 - Formula 409 Antibacterial All Purpose
 - Windex Original
 - Lysol Bathroom Cleaner
 - Soft Scrub Original
 - Tilex Soap Scum Remover
- For Rust Removal:
 - Bon Ami
 - Super Iron Out Multi-Purpose Rust Stain Remover
 - Zud Multi-Purpose Cream Cleanser

Kitchen Sinks



- Rinse thoroughly and use a soft cloth to wipe the product dry after each use.
- Soft abrasive cleaners may be used when necessary to clean KOHLER vitreous china products. Strong abrasive cleaners will scratch and dull the surface.

Care Tip: KOHLER kitchen sink accessories, including bottom basin racks, wire rinse baskets, cutting boards and colanders will help to protect the surface of your sink. Call 1-800-4-KOHLER for model numbers, or go to a KOHLER Registered Showroom to purchase accessories.

Products to Consider

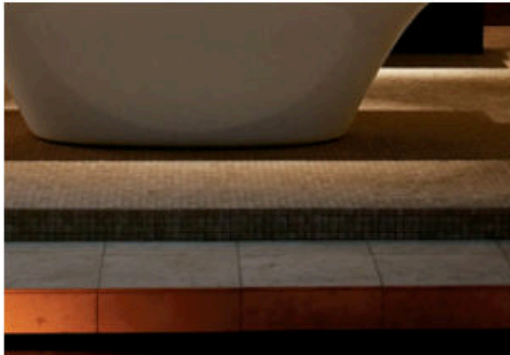
- Fantastik Antibacterial Heavy Duty
 - Formula 409 Antibacterial All Purpose
 - Soft Scrub Original
 - Windex Original
- For Rust Removal:
 - Bon Ami
 - Super Iron Out Multi-Purpose Rust Stain Remover
 - Zud Multi-Purpose Cream Cleanser

Cleaning instructions listed pertain only to their corresponding material, and are not intended for faucet cleaning. See page 5 for specific faucet cleaning instructions.

7

Plastics

Whirlpools, Baths & Showers



- Wipe bath/whirlpool/shower after each use with a soft cloth or squeegee.
- Do not use abrasive cleaners.
- Avoid using aerosol products on the bath surface.

Care Tip: To restore dull or scratched units: Apply white automotive polishing compound with a clean cloth. Rub scratches and dull areas vigorously. Wipe off residue. Follow with a coat of white automotive paste wax. Do not wax areas where you walk or stand. Damaged surfaces can be repaired. Check the Yellow Pages under "Fiberglass-Repair."

Products to Consider

- Fantastik Antibacterial Heavy Duty
- Lysol Bathroom Cleaner
- Tilex Soap Scum Remover
- Rust Removal: Super Iron Out Multi-Purpose Rust Stain Remover

Toilet Seats



- Avoid using aerosol products on the surface.
- Do not allow abrasive chemicals and cosmetics (such as fingernail polish and aftershave) to come in contact with the toilet seat, as they can damage the finish.
- Painted wood seats require special care and cleaning. Use only mild detergent (such as dishwashing soap).

Care Tip: Clean seat with a mixture of dishwashing liquid and water, or any of the products listed below, using a soft sponge or cloth. Rinse clean, dry with a soft towel, and let the seat air-dry to ensure the hinge area dries completely. If you remove the toilet seat, consider the use of a large utility sink to assist in cleaning.

Products to Consider

- Comet Bathroom Cleaner
- Formula 409 Glass & Surface
- Windex Original

Stainless Steel

Lavatories



- Clean stainless steel at least once a week.
- Always apply stainless steel cleaner/polish with a nonabrasive cloth or sponge, working with, not across, the grain.
- Do not use steel wool, wire brushes or abrasive sponge pads.
- Cleaners containing chloride are not recommended. If used, rinse the surface immediately to prevent corrosion.
- Stainless steel lavatories with colored finishes require special care and cleaning. Use only a mild detergent (such as dishwashing soap and water) for cleaning.

Kitchen Sinks



- Clean stainless steel at least once a week.
- Always apply stainless steel cleaner/polish with a nonabrasive cloth or sponge, working with, not across, the grain.
- Do not use steel wool, wire brushes or abrasive sponge pads.
- Cleaners containing chloride are not recommended. If used, rinse the surface immediately to prevent corrosion.

Care Tip: Allowing water to evaporate on metal will form water deposits. To avoid this, it is important to use a dabbing action to dry metal, not an abrasive or rubbing action. Cleaning with a damp sponge and buff drying should keep your product looking beautiful.

Products to Consider

- Fantastik Antibacterial Heavy Duty
- Formula 409 Glass & Surface
- Fantastik Antibacterial All Purpose
- Lysol Bathroom Cleaner

Products to Consider

- Fantastik Antibacterial Heavy Duty
- Formula 409 Glass & Surface
- Fantastik Antibacterial All Purpose

Cleaning instructions listed pertain only to their corresponding material, and are not intended for faucet cleaning. See page 5 for specific faucet cleaning instructions.

9

Furniture

Countertop Surfaces



- Clean up spills immediately.
- Use only a mild detergent and warm water to clean. Never use acidic or abrasive cleaners.
- Consider products that seal and restore marble and stone.

Care Tip: KOHLER® countertops are supplied pre-sealed; however, it is recommended that you test the seal after a few years of use. Simply apply a few droplets of water to the surface. If the water beads, your countertop is maintaining its seal. If the water soaks into the countertop, resealing should be considered.

Wood Furniture



- Blot spills immediately with a soft, damp cloth.
- Do not expose wood furniture to direct sunlight, drying heat sources or dampness.
- Protect wood surfaces by using felt, leather or cork under accessories. Never slide objects across wood surfaces.
- Dust frequently with a soft cloth in the direction of the grain.
- Use only products specifically made for cleaning wood. Avoid using oily polishes or waxes, or products containing silicone.

Care Tip: Every six months, remove soil buildup by rubbing with a soft cloth dampened in a 50/50 solution of warm water and an ammonia-free detergent. Wipe clean with cloth dampened in warm water. Wipe dry.

Products to Consider

- Orange Glo Wood Cleaner & Polish
- Scott's Liquid Gold Wood Cleaner & Preservative

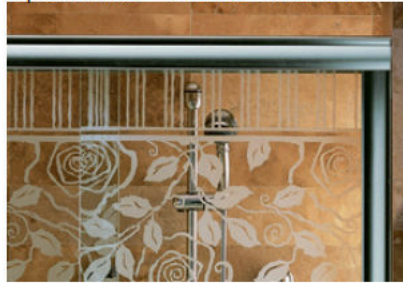
Special Surfaces

KOHLER® Artist Editions



- Do not use bristle brushes, abrasive sponges or abrasive cleaners. They will scratch decorated surfaces.
- Do not let cleaners soak on the surface.
- Rinse and wipe fixtures after use and cleaning to prevent soap buildup.
- Gold and platinum used on decorative products are like fine jewelry. Use only warm water to clean. Dry with a soft cloth.

Shower Doors, Mirrored Cabinetry & Spun Glass™ Vessels Lavatories



- Do not use bristle brushes, abrasive sponges or abrasive cleaners. They will scratch some glass surfaces.
- Do not let cleaners soak on the surface.
- Rinse and wipe glass after use and cleaning to prevent soap buildup.
- Use a shower squeegee to clean glass doors after showering.

Kamala™ Vessels Lavatories in Tumbled Bronze



- Bronze is easily scratched. Avoid contact with metal objects.
- Keep the basin clean and dry by wiping with a soft cloth after use.
- Clean with water and a VERY SMALL amount of dishwashing soap. Never use abrasives, metal polishes or lime/rust removal products.
- Do not allow toothpaste, carbonated beverages or other household products to rest on the surface for a prolonged period of time.
- Apply a temporary protective coating of carnauba-based paste wax when you notice that water no longer forms beads on the surface.

Care Tip: To avoid lime buildup in hard water areas, make a point to wipe the product dry after each use, just as you would towel dry your hands with a soft cloth. To prevent scratching while cleaning, save old T-shirts or flannel nightgowns for great cleaning cloths.

Care Tip: Your bronze product features a living finish, meaning that it will patina over time by chemically induced oxidation, or tarnishing, of the surface. These changes are normal and add to the beauty of your product. However, a patina recovery kit may be used to restore the original finish. To order, call 1-800-4-KOHLER or visit KOHLER.com.

Products to Consider

- Formula 409 Glass & Surface
- Windex Original

Products to Consider

- Cinch Streak Free Multi-Surface Cleaner
- Mr. Clean Antibacterial Multi-Surface Spray
- Formula 409 Glass & Surface

Products to Consider

- Formula 409 Glass & Surface

Cleaning instructions listed pertain only to their corresponding material, and are not intended for faucet cleaning. See page 5 for specific faucet cleaning instructions.

11

Special Considerations

Flushing the BodySpa System



Flush your BodySpa system twice a month or more, depending upon usage.

1. Fill the footbath with hot water to a level 2 inches above the suction cover.
2. Add 2 teaspoons of a low-foaming, powder automatic dishwasher detergent and 4 ounces of household bleach (5% – 6% sodium hypochlorite) to the water.
3. Run the BodySpa jets and waterfall for 5 to 10 minutes each. Then shut off the BodySpa and drain the water.
4. Fill the footbath with cold water to a level 2 inches above the suction cover, and run the BodySpa jets and waterfall for another 5 to 10 minutes each. Drain the footbath and wipe it dry with a soft cloth.

Flushing a Whirlpool System



Flush your whirlpool system twice a month or more, depending upon usage.

1. Adjust the jets fully clockwise so there is no air induction.
2. Fill the bath with warm water to a level 2 inches above the highest jets, or leave water in the bath after using.
3. Add 2 teaspoons of a low-foaming, powder automatic dishwasher detergent and 20 ounces of household bleach (5% – 6% sodium hypochlorite) to the water.
4. Run the whirlpool for 5 to 10 minutes. Then shut off the whirlpool and drain the water.
5. If desired, rinse bath surfaces with water.
6. Clean bath surfaces as needed with recommended cleaners (see pages 6 and 8).

KOHLER.com

Form 1015818-DA 9/06
© 2006 by Kohler Co.
Kohler Co. Kohler, Wisconsin 53044
Printed in U.S.A.
1-800-4-KOHLER
(1-800-456-4537)